

## **Welwyn Hatfield Cycling Forum: Minutes of meeting held 11th April 2012**

**Present:** Roger Moulding, Chris Whitehouse, Ian Gregory, John Shead, Jeremy Payne, Bryn Jones, Cathy Wilkins, Michael Harnell, Jon Askham, Emma Ramsdale, Kinetic Cycles. Trevor Mason HCC.

**Apologies for absence:** Chris Cooke, Tom Morley

### **Minutes of the previous meeting held 14<sup>th</sup> March 2012 and matters arising**

**Cycle Watch** 2 signees so far, there is a question over data security, action: Chris to chase this. Plan is to launch at Kaleidoscope 2012.

Reminder to Cathy to send off Kaleidoscope application and cheque.

**Action: Cathy**

Check list of repairs Chris item outstanding. **Action: Chris**

Details of rides to be added to list, a customer friendly option updated by Roger.

Events to be added to Bike week action: **Action: John ongoing.**

Hertfordshire Cycle Rides booklet, **Action: Ian ongoing**

Next months meeting to start at 7.30 due to launch of new bridleway,

Cycle Nation AGM is 12<sup>th</sup> May, same as the CTC AGM, Roger is to attend Cycle Nation.

Blackfan Road cycle path is now complete.

Question regarding the Local Access Forum, Ian is the official cycle representative on this group. Minutes are available, **Action: Ian to give Chris a link to add to Cycle Forum website.**

### **Presentation by Trevor Mason, Safe and Sustainable Journeys Manager**

#### **My Role**

- Manage the Safe and Sustainable Journeys team
- Responsible for the promotion of sustainable modes of transport and for road safety, education, training and publicity
- Report to Head of Transport, Access and Safety Unit

#### **My Background**

- Worked for HCC since 1988
- Mainly in transport policy

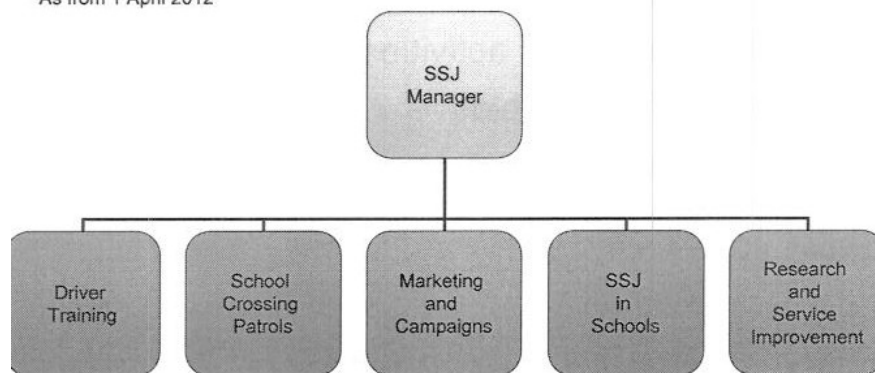
- Took up new SSJ role in April 2011

### **My Objectives**

- To increase the use of cycling for "commuter" journeys
- To reduce the number of cyclists who are injured

## **SSJ Structure**

As from 1 April 2012



### **Links to Herts Highways**

- Dave Burt - cycle infrastructure
- Andrew Freeman - Safer Routes to Schools

Subject to Highways Service reorganisation (October 2012)

### **Opportunities for Joint Working**

- Sounding board
- Mutual promotion of activities
- Support for funding bids
- Urban Transport Plans
- Working with schools

### **Development of Role**

- Reviewing intelligence
- Health and Wellbeing Agenda
- Social ! digital media
- Better links with infrastructure programmes

## Issues Raised

- Specific locations
- Wider campaigns
- Co-ordinating events
- Consultation on developments which affect cycling

## Contact Details

Trevor Mason

Safe and Sustainable Journeys Manager

Tel: 01992556117

E-mail: trevor.mason@hertscc.gov.uk

HCC Cycle Forum meeting is 26<sup>th</sup> April. Cathy to attend on behalf of WHBC & the Cycle Forum.

Trevor mentioned the Local Transport Plan which is soon up for review.

**Action: Cathy to ask Antia Ward / Paul Everard, WHBC if they have received anything about this yet.**

Welwyn Hatfield Times had an article on Big Pedal an initiative that Trevor is supporting. **Action: Cathy to scan the article and send to Trevor.**

## Big Lottery Grant

Well done to Roger for obtaining this £1100. To be spent as follows:

£700 gazebo, £150 for table, £50 for chairs, £100 for publicity and display materials

£100 events stall fees, Kaleidoscope and Welwyn Festival.

Receipts for all purchases must be submitted.

WHBC have offered the forum shared use of one of their garages for storage. **Action: Cathy to arrange.**

It was noted that Hatfield have a "Community news letter" it was thought that this may be issued by the Parish Council but could be useful for publicising Cycle Forum events.

Events 2012 updated and attached. **NB all rides starting Welwyn Garden City now from Kinetic Cycles, Church Road, AL8 6PT.**

**Kinetic Cycles** a new cycle shop opened in Church Road, Welwyn Garden City, Jon and Emma own this shop and would like to support the forum by advertising events. They offer CTC discount and would be

agreeable to offer Cycle Forum members a 10% discount on parts and accessories if membership cards can be offered.

This was discussed and it was agreed that a charge for membership should be made a suggestion of £10 per year was floated.

**Any Other Business**

Email usage to be put on the agenda for discussion at the next meeting.

**Next meeting 9<sup>th</sup> May 2012. Note well this meeting starts at 7.30**